



# RMR HOUSE AND SIDING WASH

## READY TO USE

### SELL SHEET

RMR House and Siding wash has a built-in hose-end adapter and potent commercial-grade formula, you can simply prep, clean, and rinse for bright, stain-free surfaces in minutes; Pair with eye protection and rubber gloves when handling. Preserve the exterior beauty and value of your home, restoring vinyl, brick, stucco, aluminum, concrete, painted wood, trim, PVC, plastic masonry, and gutters on contact



Superior stain-fighting power



Multipurpose solution



Fast-acting treatment



Cleans and brightens in minutes



User friendly hose end application

For Technical Information call 866.822.8744

These suggestions and data are based on information we believe to be reliable. They are offered in good faith, but without guarantee, as conditions and methods of use of this product are beyond our control. Neither RMR Solutions LLC, nor its agents shall be responsible for the use or results of use of this product or any injury, loss or damage, direct or consequential. We recommend that the prospective user determine the suitability of this product for each specific project and for the health and safety of personnel working in the area.



USER FRIENDLY



NO SCRUBBING REQUIRED



QUICK RESULTS



HOMEOWNER  
GRADE



# SHOW YOUR EXTERIOR SOME LOVE

## How To Use:



**1. APPLY:**  
solution on dry surface with valve on the CLEAN setting.



**2. WAIT:**  
5-10 minutes to allow product to saturate surface. Do not let dry on surface.



**3. RINSE:**  
off to remove staining.

**Stop scrubbing and step away from the ladder with RMR House and Siding Wash, the heavy-duty outdoor treatment that lifts and rinses away stains and extensive discoloration caused by mold, mildew, and algae. Blast away dirt, debris, residue, marks, and buildup don't stand a chance with the house and siding wash that quickly restores and refreshes a wide range of surfaces to reveal a picture-perfect, sparkling clean home**

**Rating: 4.3/5** ★★★★★

"Simply follow the instructions on the bottle and connect the hose. It is a simple setup and easy to do. I noticed my house definitely looked much cleaner post use. I did scrub it in some of the more difficult spots. It came right off with the hose and I didn't see any adverse reaction from it. Overall It does what it says just make sure to read and follow the instructions for best use."

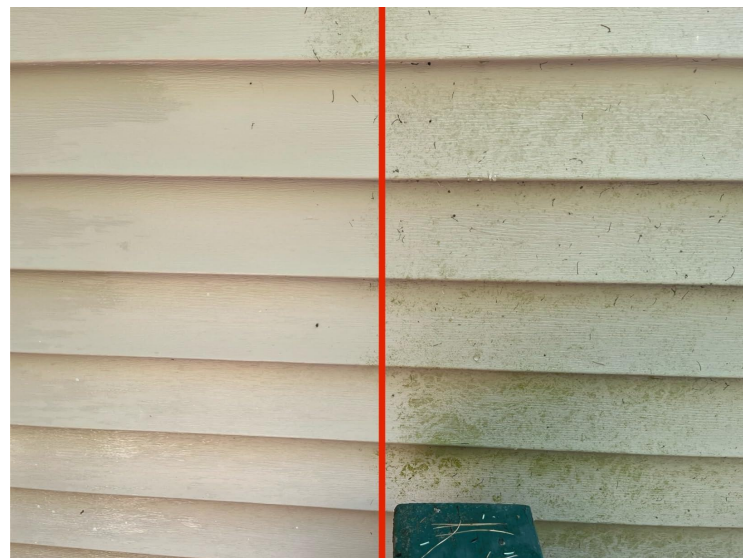
"The RMR House and Siding Wash was very easy to use and no scrubbing was required at all. It was easy to attach my garden hose to the container. I sprayed it onto the side of my house where there was some old stains and rinsed it off after 5-10 minutes. I love the results and my house looks nice and new."

**For additional information and for technical and safety data sheets, please visit [www.rmrsolutions.com](http://www.rmrsolutions.com)**



**Made in USA**

**RMR SOLUTIONS**



**RMRSOLUTIONS.COM**